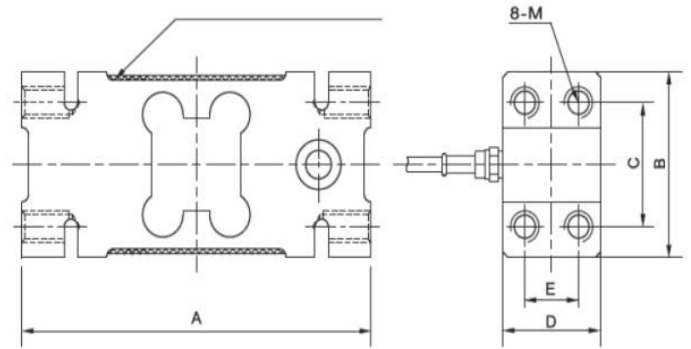
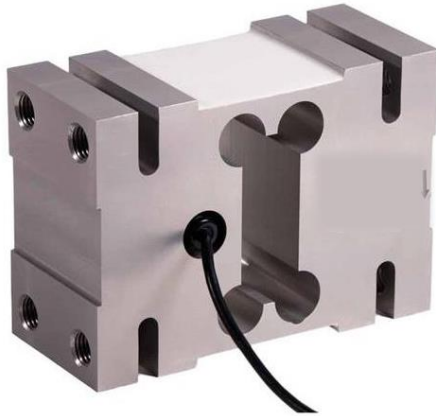


Model LD 2112

Single Point

Aluminum

Single Point



APPLICATION

Suitable for Single Point Belt Weighing, Hoppers, platforms and Packing Machines

FEATURE

Aluminum, IP 65

DIMENSIONS

Rated Capacity	A	B	C	D	E	F
Kg/mm						
250-500	146.0	95.0	70.0	60.0	36.0	M12X1.75
750-2000	176.0	123.0	95.0	76.0	46.0	M16X2
Lb/Inches (Conversion of above dimension)						
500-1000	5.76	3.75	2.76	2.36	1.42	M0.47X0.06
1500-4500	6.94	4.85	3.75	3.00	1.81	M0.63X0.07

SPECIFICATION			
Rated Output	2 ± 0.1 mv/v	Creep (30minutes)	± 0.02 % FS
Combined Error	≤ ± 0.023 % FS	Zero Balance	± 1.00 % FS
Non-Linearity	± 0.02 % FS	Temperature Effect on Zero	± 0.02 % FS/ 10°C
Hysteresis	± 0.02 % FS	Temperature Effect on Output	± 0.02 % FS/ 10°C
Non-Repeatability	± 0.01 % FS	Input Resistance Ω	410 ± 15Ω
Insulation Resistance	≥5000MΩ	Output Resistance Ω	350 ± 3
Excitation Voltage	10V (DC / AC)	Safe Overload	120%FS
Compensated Temperature Range	-10°C ~+ 40 °C	Cable Color Code	+ Excitation Red
Operating Temperature Range	20°C ~+ 60 °C		- Excitation Black
Cable Length	Φ0.21x10ft / Φ 5.4x3M	+ Signal	Green
		- Signal	White