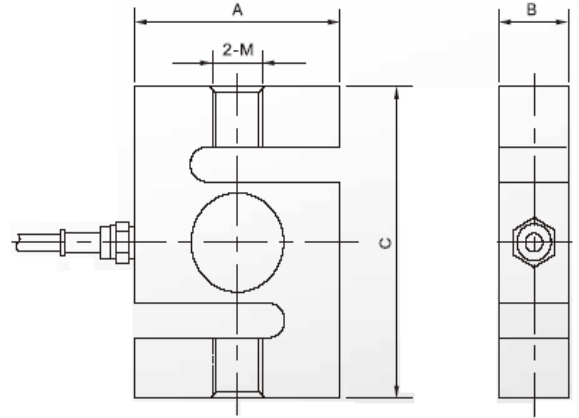


Model LD 2563

S Type

Alloy Steel

S Type



APPLICATION

Electromechanical Scales, Crane Scales, Tank, Bin and Hopper Weighing

FEATURE

- Alloy Steel, Tension and Compression Type, IP67

DIMENSIONS

Rated Capacity	A	B	C	Thread
kg/mm				
5-50	51.0	13.0	64.0	2-M
100-500	51.0	19.1	76.0	M8X1.25
1000-2000	54.0	25.4	76.0	M12X1.75
2500-5000	76.0	25.4	108.0	M12X1.75
				M18X1.5
Lb /Inches (Conversion above dimensions)				
10-100	2.01	0.51	2.52	M0.31X0.04
200-1000	2.01	0.75	3.00	M0.47X0.06
2000-4500	2.13	1.0	3.00	M0.47X0.06
5500-11000	3.00	1.0	4.26	M0.71X0.05

SPECIFICATION

Rated Output	3.0 mV/V	Creep (30minutes)	±0.02%FS
Non-linearity	± 0.02%FS	Zero Balance	± 1.00%FS
Hysteresis	± 0.02%FS	Temperature effect on zero	± 0.02%FS/10C°
Repeatability	± 0.01 % FS	Temperature effect on output	± 0.02%FS/10C°
Input Resistance Ω	385 ± 10	Output Resistance Ω	350 ± 3
Insulation Resistance	≥5000 MΩ	Excitation Voltage	10V(DC/AC)
Compensated Temperature Range	-10C°~+40C°	Operating Temperature Range	20C°~+60C°
Cable Length	16.4ft / 5M	Cable Color Code	+ Excitation Red
IP	67		- Excitation Black
Safe Overload	120%		+ Signal Green
			- Signal White